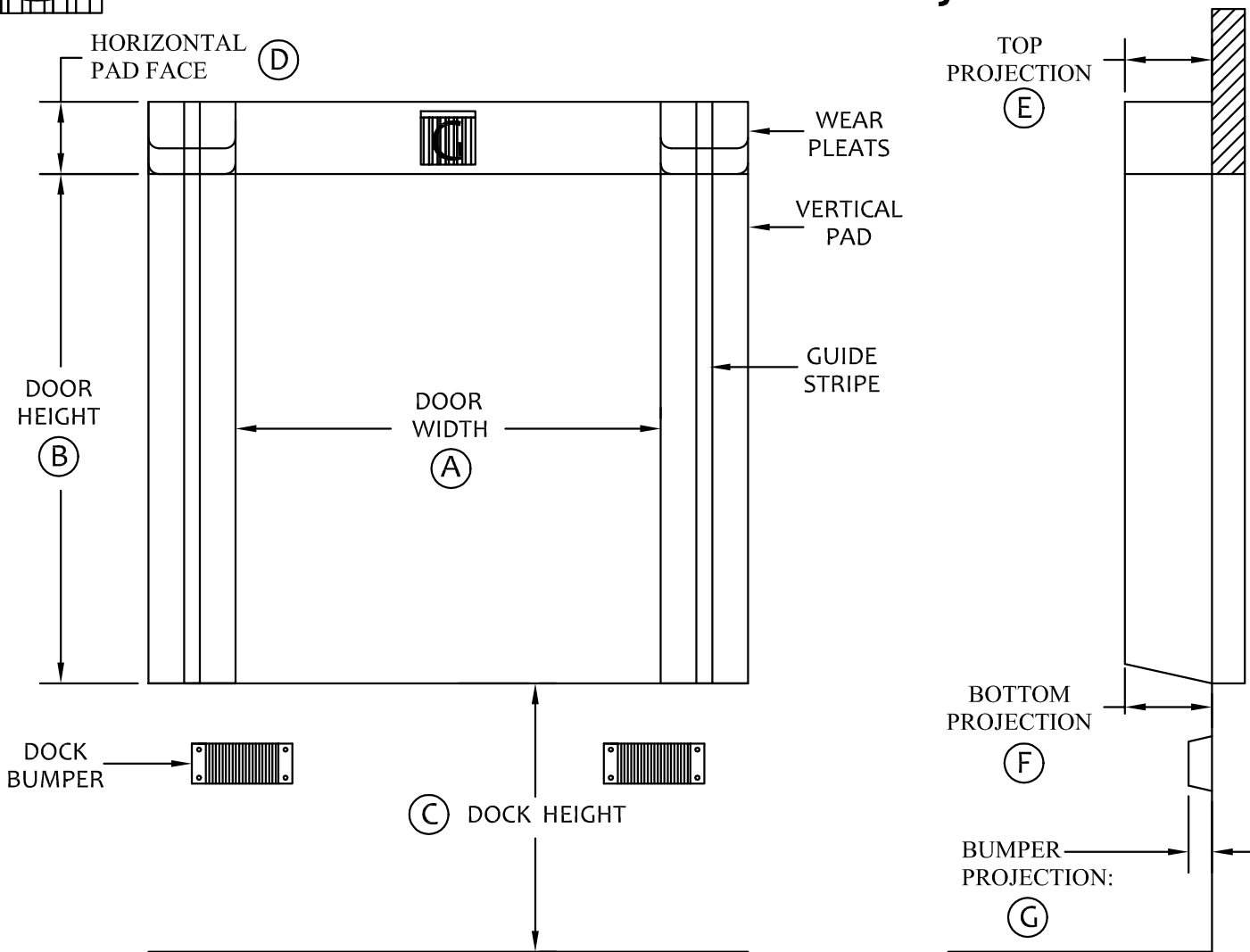
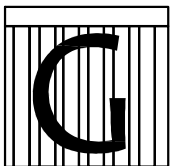


GATEWAY INDUSTRIAL PRODUCTS, INC.

Dock Seal Survey



SPECIFY DOCK SEAL PAD TYPE AND MOUNTING

<input type="checkbox"/> BEVEL PAD FLUSH MOUNT 	<input type="checkbox"/> RECTANGULAR PAD, OFF-SET MOUNT 	<input type="checkbox"/> RECTANGULAR PAD, FLUSH MOUNT
SEAL COLOR:	STRIPE COLOR:	WEAR PLEAT: <input type="checkbox"/> 4" <input type="checkbox"/> 8" <input type="checkbox"/> 16"
MATERIAL WEIGHT: <input type="checkbox"/> 22 oz <input type="checkbox"/> 40 oz	HEAD CURTAIN: <input type="checkbox"/> YES <input type="checkbox"/> NO	FULL PLEAT STRIPE: <input type="checkbox"/> YES <input type="checkbox"/> NO
DOOR WIDTH (A):	DOOR HEIGHT (B):	DOCK HEIGHT (C):
HORIZONTAL PAD FACE (D):	TOP PROJECTION (E):	BOTTOM PROJECTION (F):
BUMPER PROJECTION (G):	SIDE PAD WIDTH: FACE (H):	SIDE PAD WIDTH: BACK (I):
DISTANCE BETWEEN OPENINGS MORE THAN 1 OPENING:	CLEARANCE: TOP OF DOOR FOR MOUNTING:	CLEARANCE: SIDES OF DOOR FOR MOUNTING:
DRIVE APPROACH: <input type="checkbox"/> LEVEL <input type="checkbox"/> INCLINE <input type="checkbox"/> DECLINE		