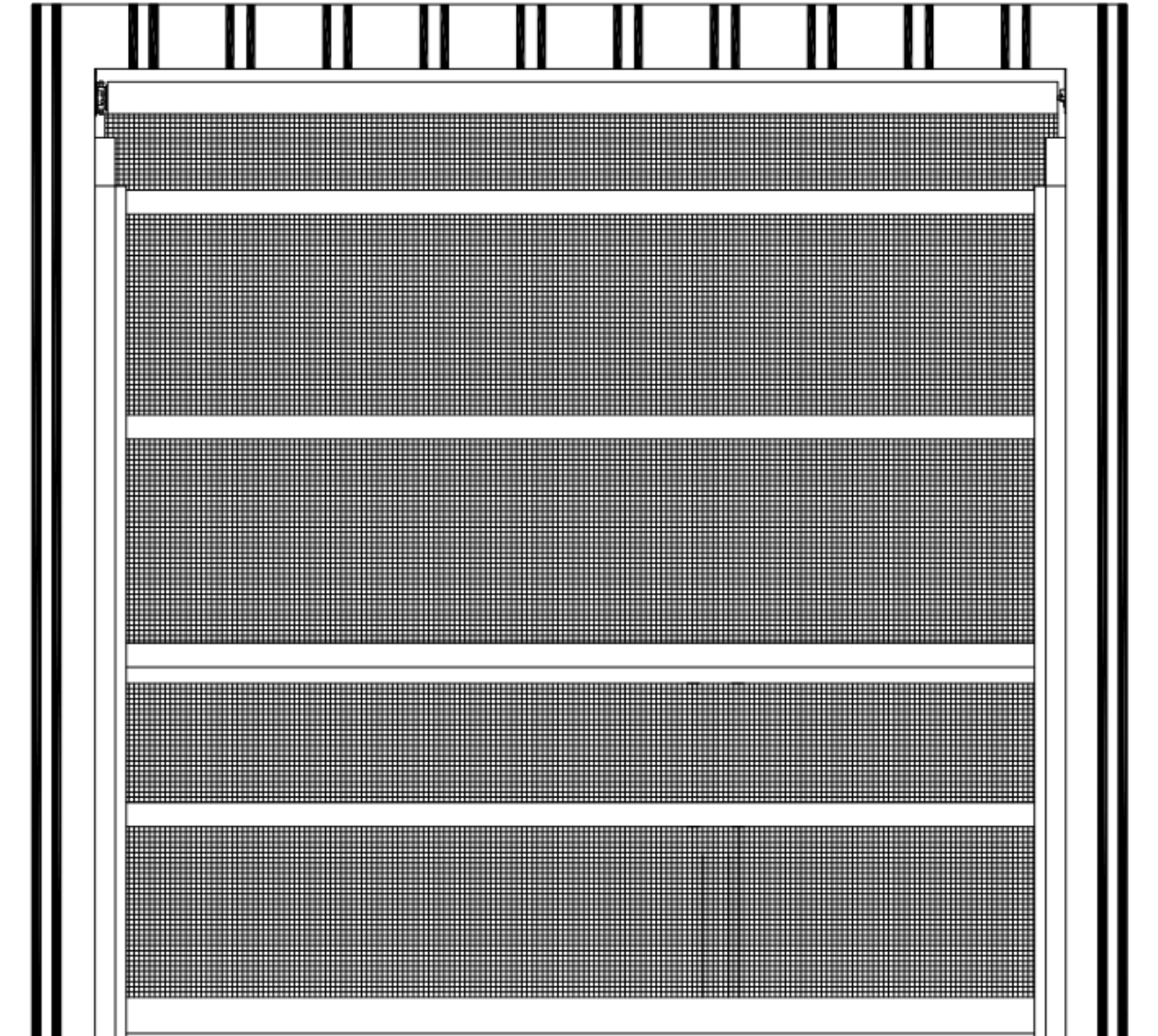




**GATEWAY
AUTOMATIC ROLL-UP
HEADER MOUNT DESIGN**

INSTALLATION INSTRUCTIONS



	WIDTH	HEIGHT	MOTOR MOUNTED
DOOR OPENING SIZE			

RECEIVING AND HANDLING

Upon receipt of door, inspect the contents for shipping damage or missing hardware, if necessary initiate claim(s) with the freight carrier for any damage. **NOTE:** Any damage to the crate or packaging material should be noted on the shipping paperwork. Exterior damage may indicate concealed damage. This notation will preserve your rights should a freight claim be necessary.

HARDWARE MOUNTING INSTRUCTIONS

STEP 1. Install the mounting brackets. When installing the two brackets they must be level with respect to each other across the width of the doorway. If the brackets are not lined up correctly the door will not roll up properly.

STEP 2. Locate the motor mounting bracket. From the inside looking out, the motor mounting bracket will be mounted based on the information documented on the front page. Mount the motor bracket at the top of the jamb, so that it is within a 1/2 inch of the exterior of the building (**See Fig. 1**). **NOTE: JAMB MUST BE AT LEAST 8" TO ENSURE THAT THE ROLL WON'T STICK OUT PAST THE FRONT OF THE JAMB.** Self-tapping #10 x 3/4" screws are provided for fastening to a steel jamb. Pre-drill all fastening points with a #22 bit. Use 5/32 shim washers if needed to ensure a level condition. If fastening to a wooden jamb, round or oval head #10 x 3/4" wood screws are recommended (Not included with this package).

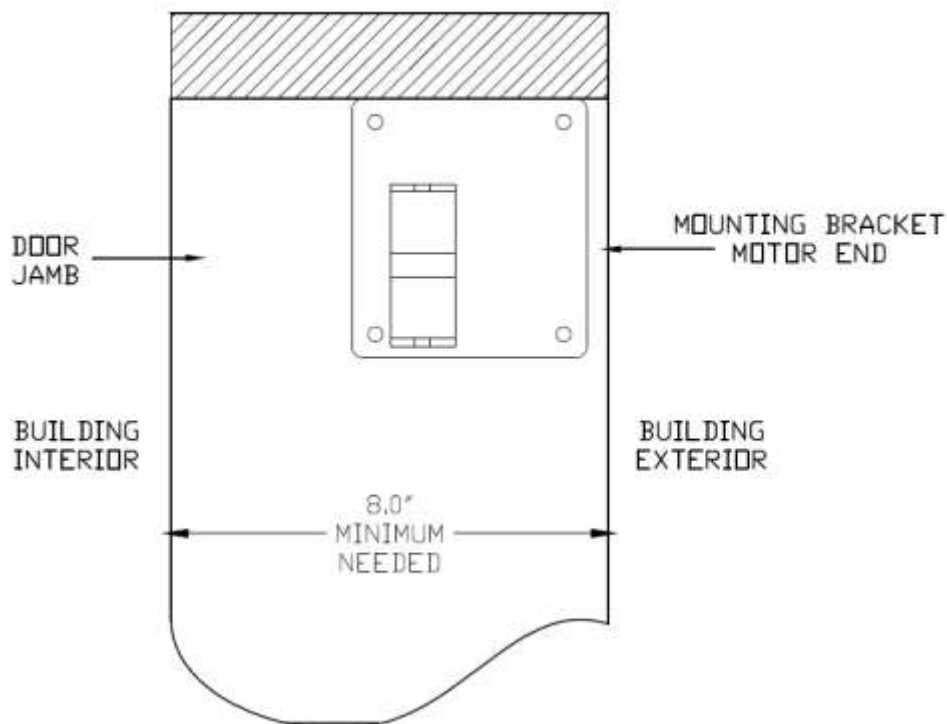


FIGURE 1

STEP 3. Locate the mounting bracket for the idler (non-drive side) end of the tube. This bracket must be installed on the opposite side of the motor mounting bracket.

STEP 4. Mount the bracket at the top of the jamb, so that it is within a 1/2 inch of the exterior of the building (**See Fig. 2**).

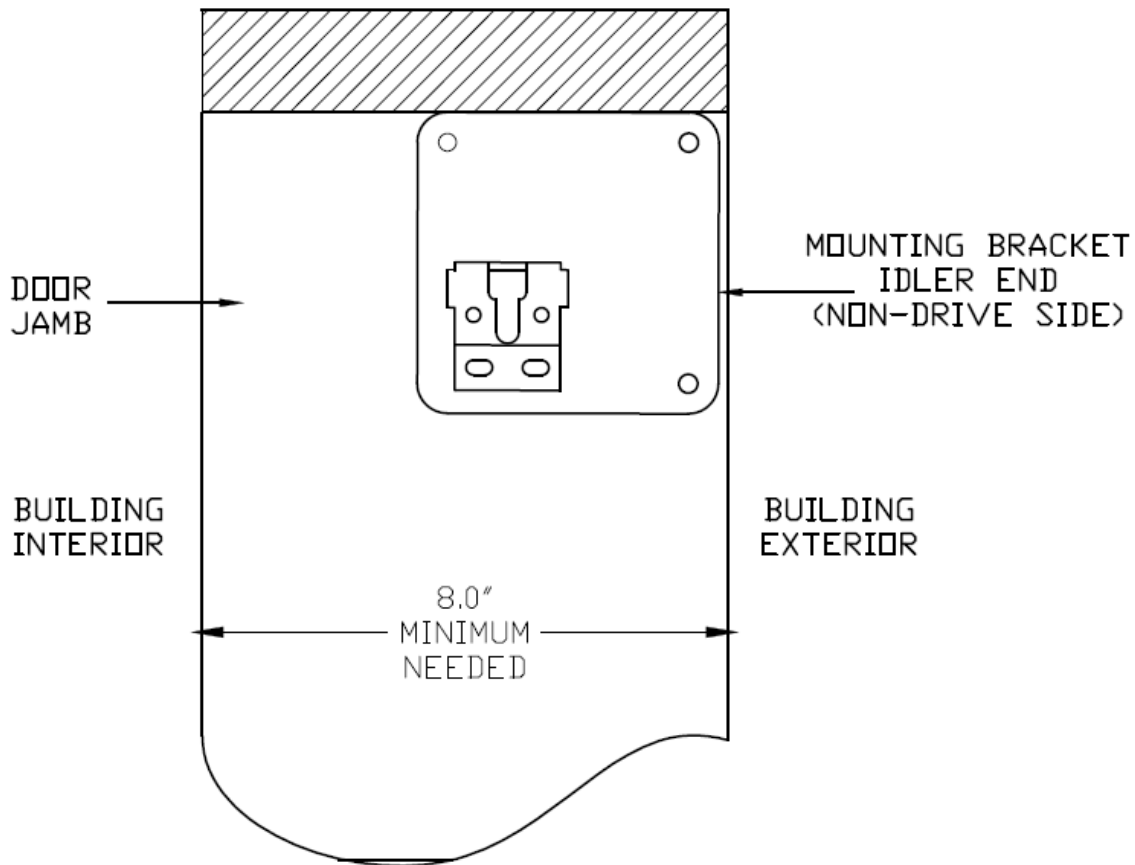


FIGURE 2

STEP 5. Position the left side guide track on the door jamb so the back of the guide track is up against the back of the mounting bracket as shown in **Figure 3**. Make sure the track is plumb. Drill pilot holes into the doorjamb through all four holes in the guide tracks with a #22 bit (or 5/32"). (Use the 2 x 2 1/8 shim plate provided as shims behind the mounting points as needed). Use the appropriate fasteners based on the jamb type to fasten the tracks to the jamb (not provided).

NOTE: ENSURE THAT THE FASTENER HEAD USED DOES NOT STICK UP FROM THE BACK OF THE TRACK MORE THAT 1/8" OF AN INCH OR THE DOOR MIGHT GET CAUGHT ON IT AS IT IS USED.

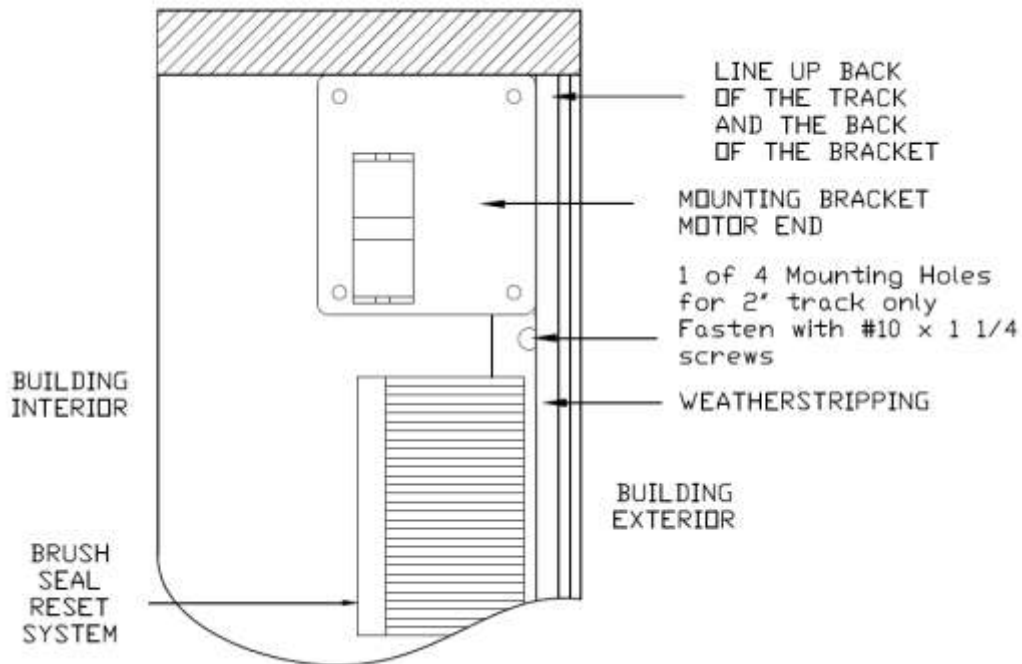


FIGURE 3

STEP 6. Measure 1" in from the back of the guide toward the interior. Mark the top of the jamb. Mount the header curtain in the header with the aluminum clamping strip at that location, such that, it just makes contact with the roll when the screen is in the closed position. The Gateway Logo will face the building exterior and the hang in the track and over the roll (**See Fig. 4**).

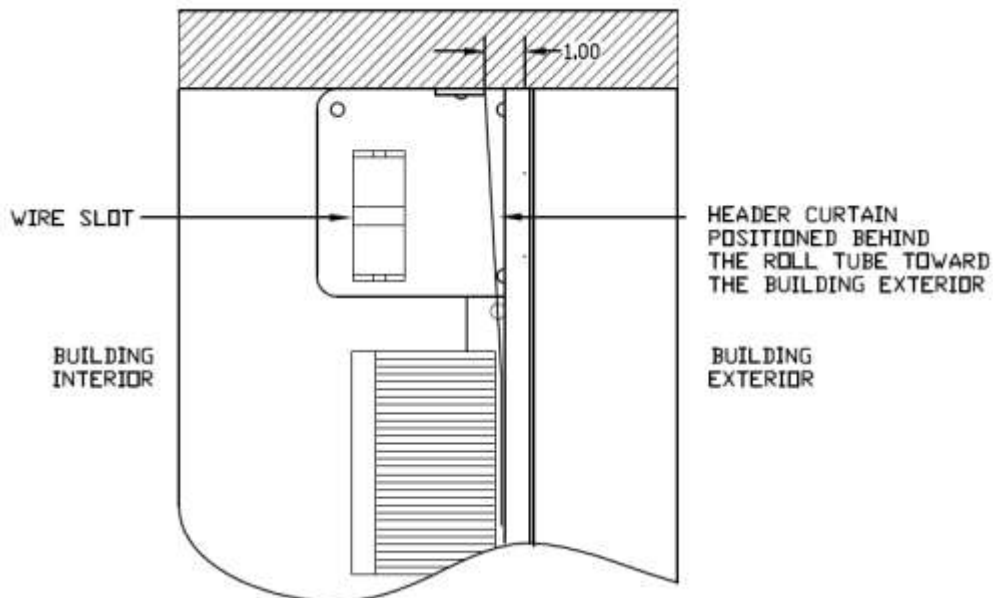


FIGURE 4

ROLL ASSEMBLY MOUNTING INSTRUCTIONS

STEP 1. Hold the idler end of the tube approximately twelve inches below its mounting bracket. With the limit switch knobs facing out; fit the round nylon spacer onto the lower pin of the motor. Run the motor wire between the motor and the motor mounting bracket in the slot. Insert the lower pin into the motor bracket (**See Fig. 5**).

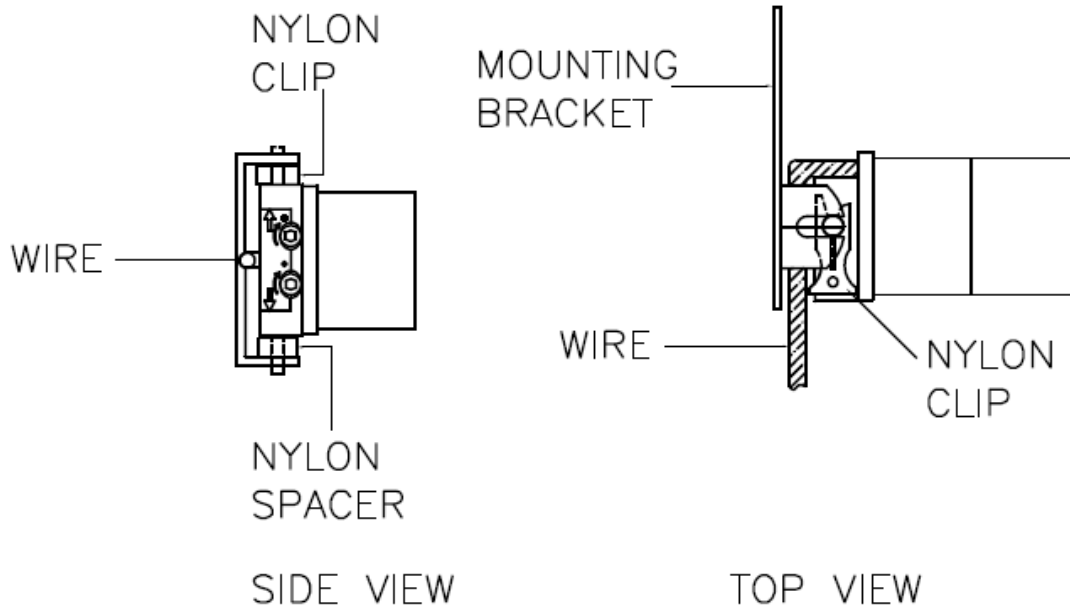


FIGURE 5

STEP 2. Lift up on the idler end of the roll and as you do guide the upper pin of the motor into the notch in the motor bracket making sure the wire is in the slot on the bracket.

STEP 3. Next, install the idler end of the roll tube by sliding the idler end pin down into the mounting bracket on the right side of the doorway opening.

STEP 4. Install nylon clip on the upper pin of the motor the short side facing the screen. (**See Fig. 5**).

STEP 5. Mount the control station approximately four (4) feet above the floor.

WIRING INSTRUCTIONS

STEP 1. Pull the motor wire taunt and ensure that it is pulled clear of any moving parts. Securely fasten the wire with clamps.

STEP 2. Wire the motor and incoming 120 VAC +/- 5% line to the control station (See Fig. 6).

NOTE: THE CONTROL STATION MUST BE MOUNTED INTO AN APPROPRIATE ELECTRICAL BOX.

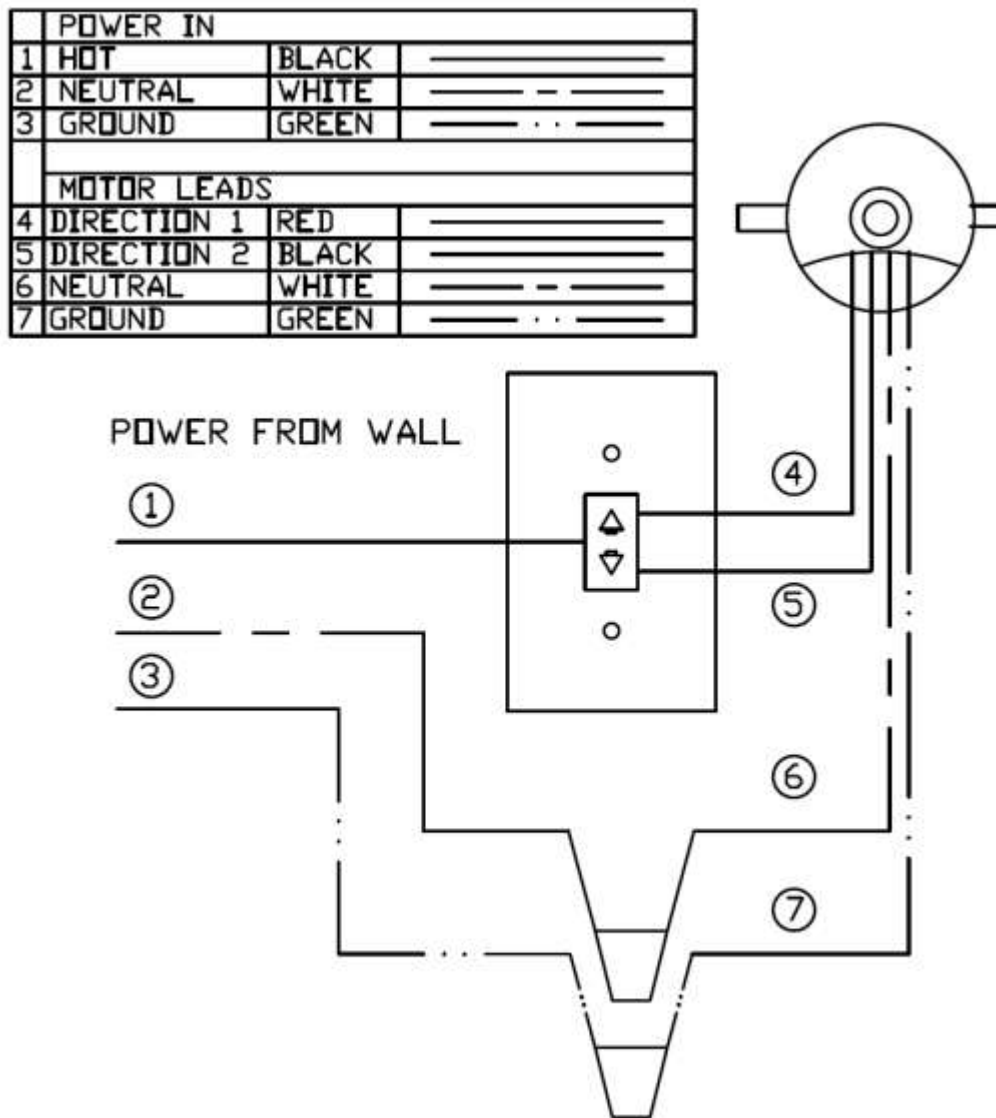


FIGURE 6

SETTING THE LIMIT SWITCHES

STEP 1. The limit switch position is adjusted by turning the screw in clockwise direction to increase the run and in a counter-clockwise direction to reduce the run of the curtain.

STEP 2. To set a limit position, run the screen in the desired direction:

- a. If it stops by itself before the required position is reached, turn the appropriate adjusting limit screw clockwise. Five turns of the screw will move the limit position by approximately 3 inches.
- b. If it does not stop by itself before the desired position, stop the operator using the control switch, and turn the appropriate adjusting screw in a counter-clockwise direction until a **slight clicking noise is heard**; from 10 to 50 turns may be necessary.

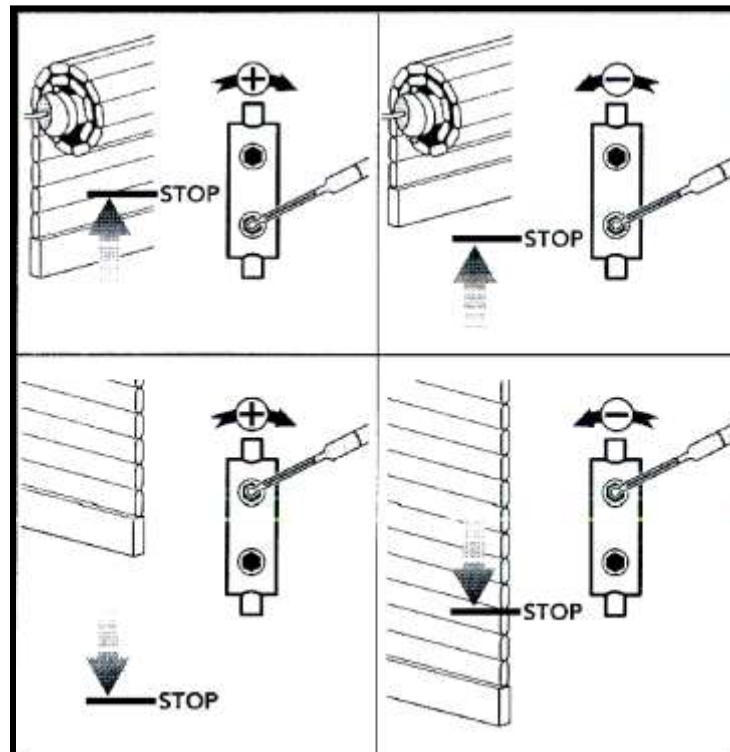


FIGURE 7

Check that the curtain stops before reaching the desired position and refer to paragraph (a) for exact setting.

NOTE: TO REDUCE RUN, IT IS ALWAYS NECESSARY TO MOVE THE CURTAIN AWAY FROM THE DESIRED POSITION AND APPROACH IN THE DIRECTION OF INCREASING RUN.

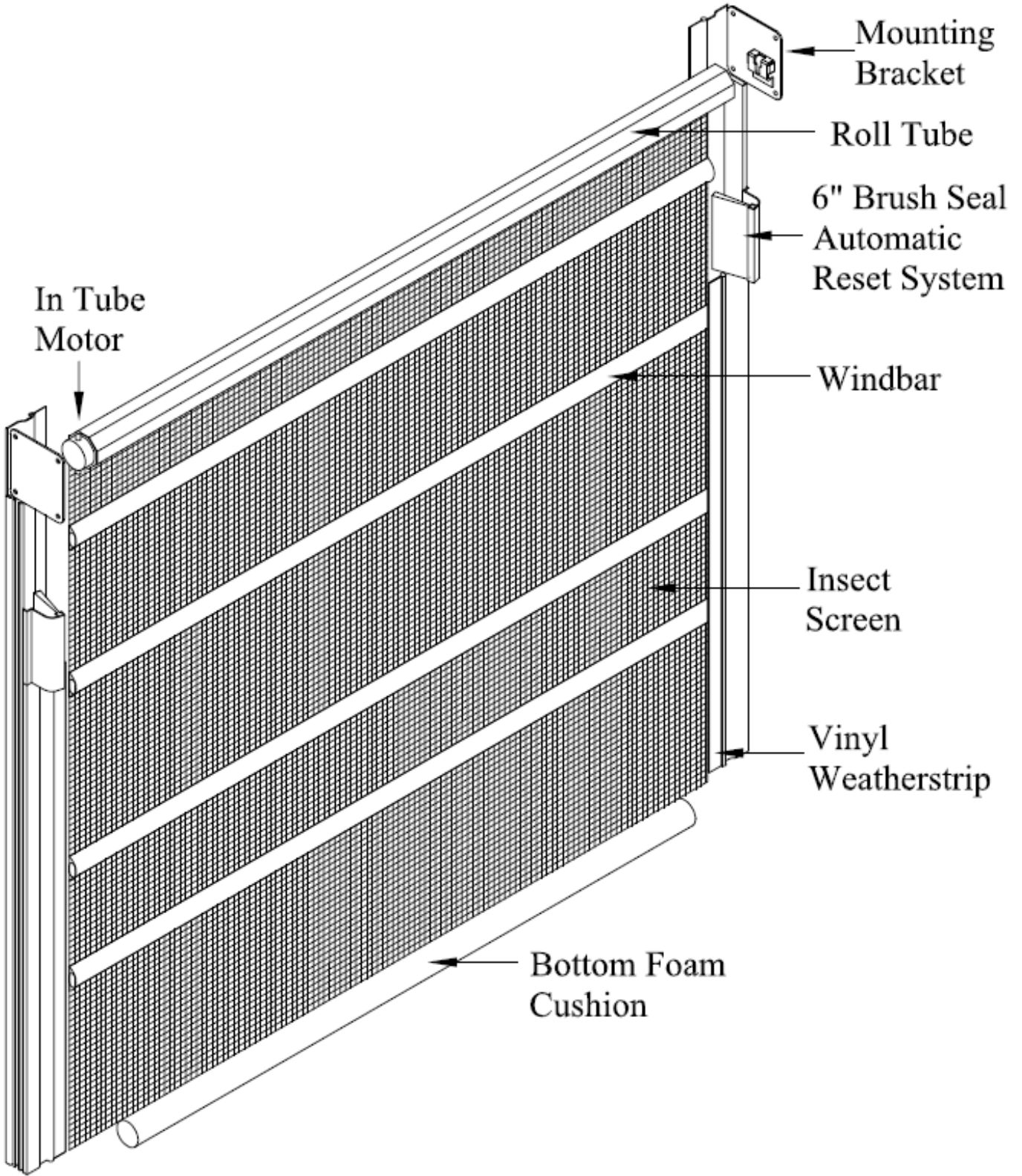


FIGURE 8