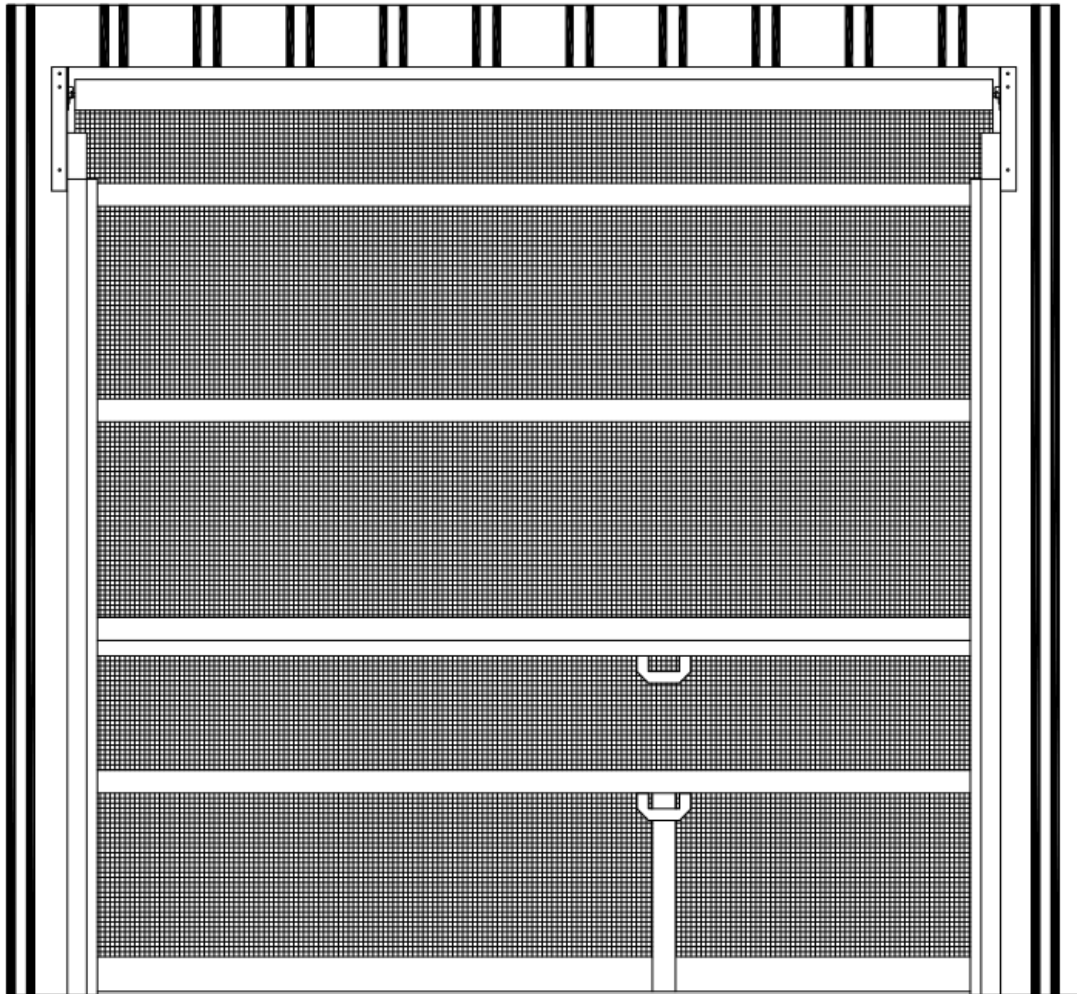




**GATEWAY
CHAINHOIST ROLL-UP BUG BARRIER
OVERHEAD DOOR STANDOFF DESIGN**



WIDTH

HEIGHT

Door Opening Size		
Sectional Door OTO Track		
Gateway Out to Out Finished Size		

*** Caution: Gateway Industrial Products will not be responsible for springs wound counterclockwise or going past the maximum of 25 complete turns with out consulting Gateway for approval.**

INSTALLATION INSTRUCTIONS

I. Receiving and Handling

1. Upon receipt of the Gateway Bug Barrier®, inspect the contents for shipping damage or missing hardware. If necessary initiate claim(s) with the freight carrier for any damage.

Important Note:

Any damage to the crate or packaging material should be noted on the shipping paperwork. Exterior damage may indicate concealed damage. This notation will preserve your rights should a freight claim be necessary.

II. Track Mounting Instructions

2. Install Gateway Door tracks to the existing sectional door tracks. First double check the width and height of the door opening and verify the opening size documented on the front page.

3. The stand-off brackets will attach directly to the existing sectional door tracks. You can attach the stand-off bracket to the track or to the reverse angle of the track. (See Fig 1.) When you attach the brackets to the sectional track the Gateway Door tracks should equal the Gateway Door Track OTO documented on the front page. (See Fig 2.)

4. The tracks each have a minimum of four stand-off brackets and one screen panel. Pull the screen with the 1" aluminum flat stock in it over to the reverse angle. Install the bracket so that the two inch leg is against the back of the tracks and the longer flat bracket projects out to the reverse angle of the sectional door. Using the stand-off bracket bolt the screen to the reverse angle or sectional door track.

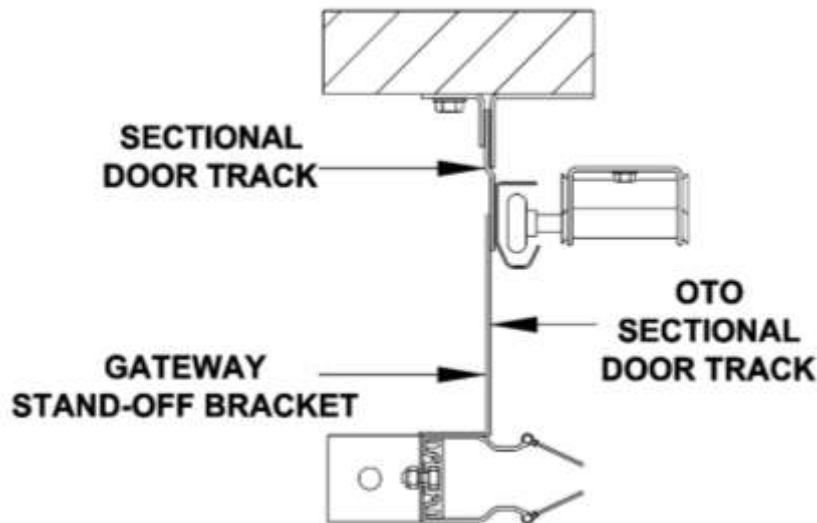


FIGURE 1

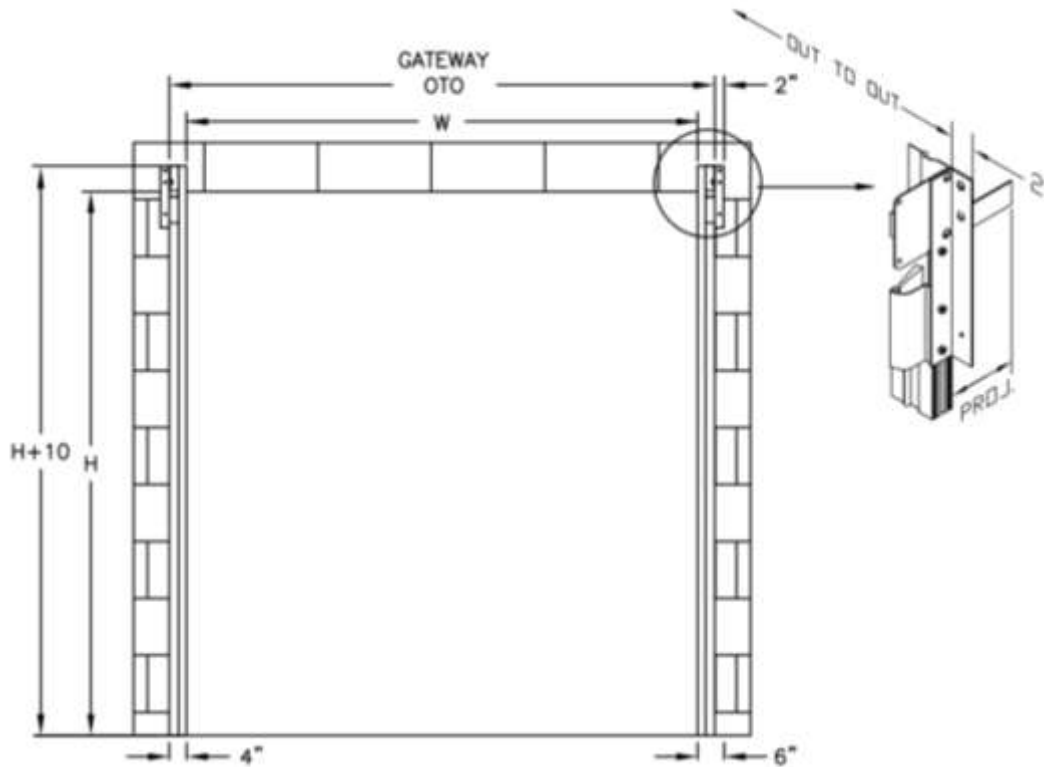


FIGURE 2

5. Next install the top angle to the back of the track assemblies with the horizontal leg of the angle facing the building interior and against the tops of the track assemblies. Use the ¼-20 x 1” machine screws provided to secure the angle to the track assemblies. Install the header curtain and top seal by reaching around under the top header angle and putting the ¼ x 20 x 1 bolts in all the holes. Lay the header curtain on the floor with the logo down, install on the ¼ x 20 x 1 bolts then the fiberglass stays, then the PVC top seal, then the 1 inch aluminum clamp strip and fasten all these components together using the nylock nuts. (See Fig. 3)

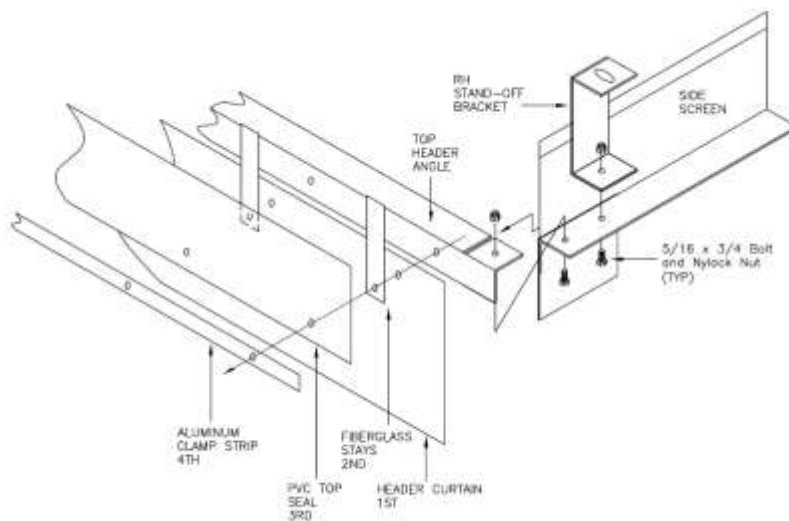


FIGURE 3

III. Insect Screen Roll Mounting Instructions

6. Ensure that the insect screen is wrapped tightly onto the roll tube.
7. Slide the flat retaining plate from the end of the spring. Using a crescent wrench, wind the tab on the spring end of the roll tube as shown. (See Fig 4.)

CAUTION: LETTING GO OF THE WRENCH DURING TENSIONING COULD RESULT IN INJURY.

Important Note:

Gateway Industrial Products will not be responsible for springs wound counterclockwise or going past the maximum of 25 complete turns with out consulting Gateway for approval.



FIGURE 4

8. After winding is complete, replace the flat retaining clip, this will lock the spring in place.
9. Flip the header curtain out of the way. Pick up the spring end of the roll tube in your right hand. Have a helper pick up the idler end of the roll tube.
10. Slip the idler notched end into the bracket ensuring that the slot of the notch matches with the bracket and completely seats. Unroll approximately 1.5 feet of screen to hang inside the track, this will reduce the roll tube diameter and aid in installation.
11. Install the tensioned spring end into the bracket on the left side of the door. Pull down on the screen a little to remove tension on the retaining clip then **REMOVE RETAINING CLIP.**
12. Roll up the extra 1.5 feet of panel so the foam pad on the bottom edge is up against the top header angle.
13. Using the handles provided, pull the curtain down until the foam pad is on the floor. Line up the grommet in the curtain with the lock down hole on the right side jamb (as viewed from

building interior) and install the lock down pin. Do this 2 or 3 times to ensure consistency. If the door is properly tensioned the door should lift to position with a little assistance.

TO MUCH TENSION (Door goes up to fast)

Pull the screen down just enough to line up spring shaft to insert the spring tension clip. Insert the clip and lift the spring end of the roll tube out of the bracket and unroll by hand about two feet and replace the tube back in the bracket. Pull the screen down a little to remove tension on the clip and remove it. Go to step 19.

NOT ENOUGH TENSION (Door won't go all the way up)

With the door where ever it's stopped, pull it down about 2 feet and line up the spring shaft and insert the spring tension clip. Lift the spring end of the roll tube out of the bracket. Roll the door up by hand all the way back to where it was. Replace the roll tube back into the bracket. Pull the screen down a little to remove tension on the clip and remove it. Go to step 19.

14. Put the idler end of the roll tube assembly into the idler bracket on the left hand side, then slide the jackshaft with the collar into the slot on the other bracket on the right.

15. Fasten the bearing on the slotted plate with the 3/8 x 1/2 bolts and nylock nuts. Slide the shaft collar up against the inside of the bearing and tighten to hold the roll in place. (See Fig. 5).

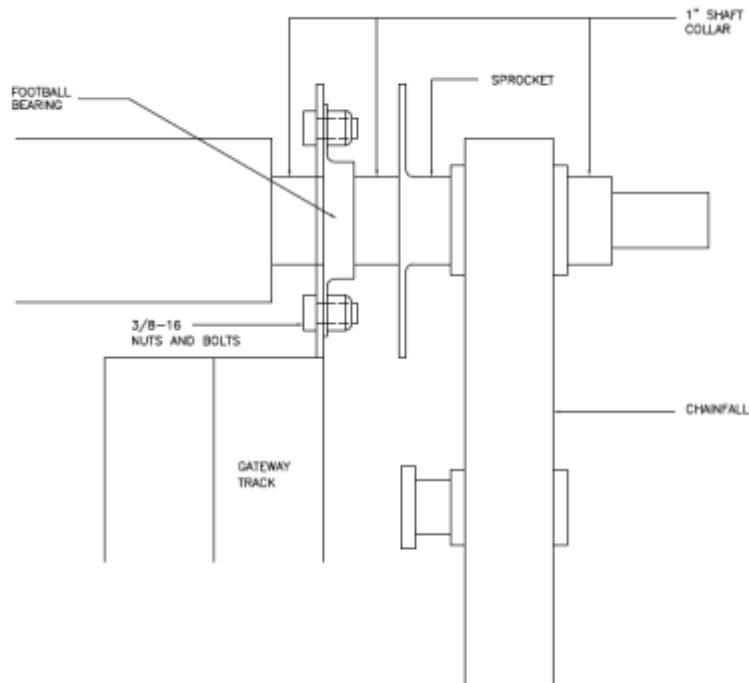


FIGURE 5

16. Slide another collar on the other side of the bearing and tighten.

17. Slide on the sprocket with the keyway and chainhoist assembly with the small sprocket down and facing the big sprocket and the last collar. (See Fig. 5).

18. Run hand chain up through the bottom front of the chainhoist by turning the small sprocket counterclockwise. Shorten the chain as needed then connect the two end with the twisted connection link.

19. Install the roller chain around the two sprockets and connect. Fasten the chain-keeper to the wall as not to interfere with the movement of the hand chain.

20. Mount the header curtain to the wall with the aluminum clamp strip provided. Make sure the curtain hangs down in the track against the back of the roll assembly. Mount the clamp strip with 10 x 3/4 screws provided in every other hole so that the top of the clamp strip is located 1" above the top of the roll assembly. The Gateway logo should face the building exterior. (See Fig. 6).

21. With the screen down and locked in place, install the 2.5-inch sheet metal screws through the holes of both mounting plates. **NOTE: FAILURE TO SECURE ROLL TUBE COULD CAUSE IN INJURY.**

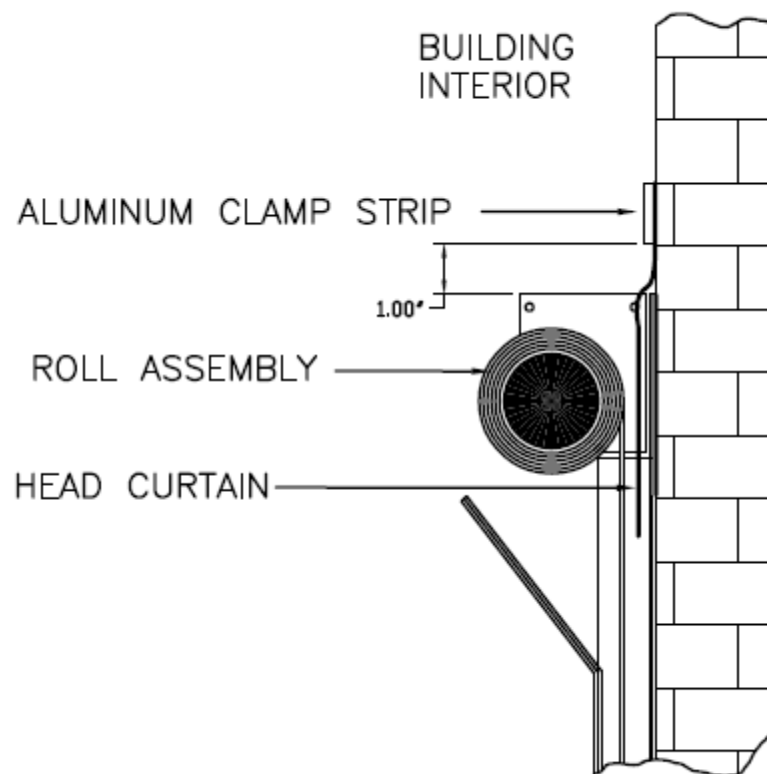


FIGURE 6